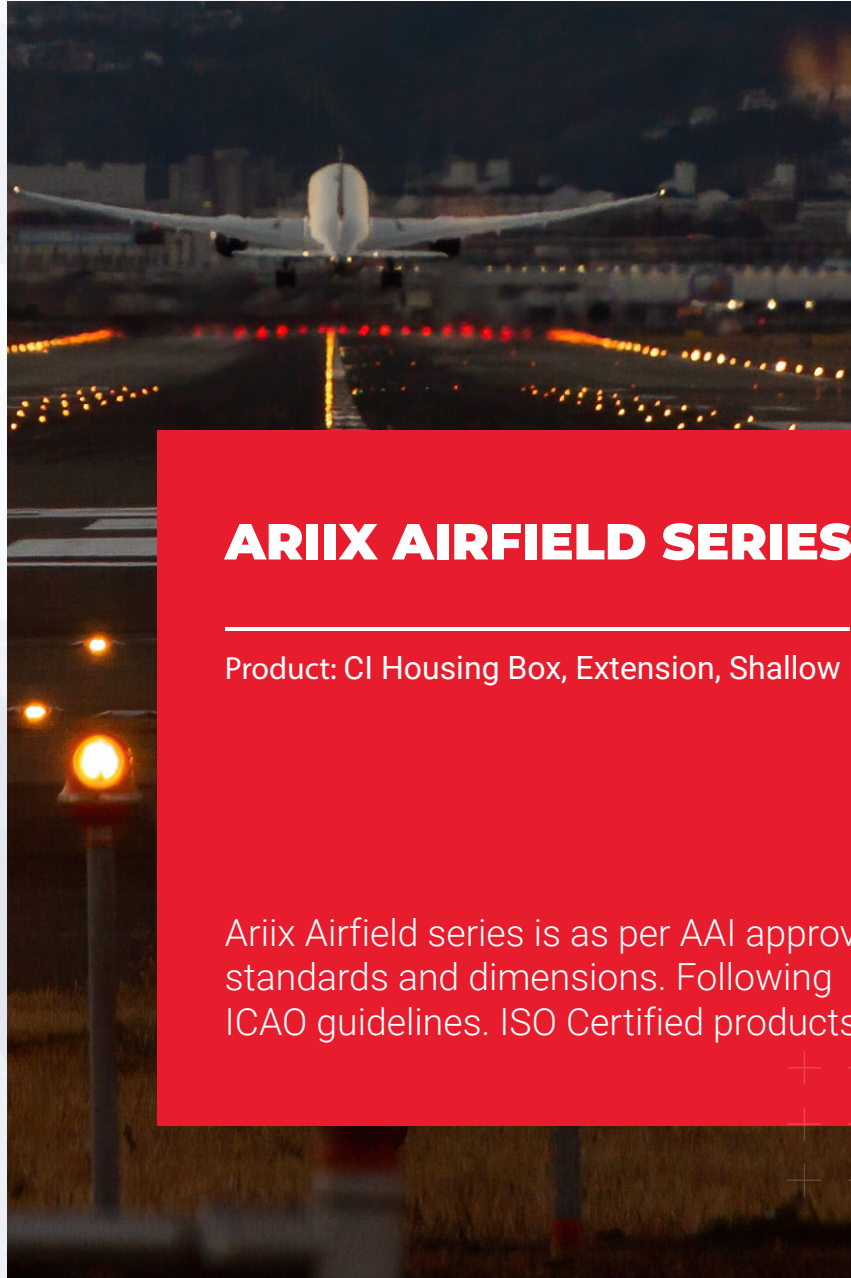




## **ARIIX PRODUCTS INDIA PRIVATE LIMITED**



### **ARIIX AIRFIELD SERIES**

Product: CI Housing Box, Extension, Shallow Base

Ariix Airfield series is as per AAI approved standards and dimensions. Following ICAO guidelines. ISO Certified products.



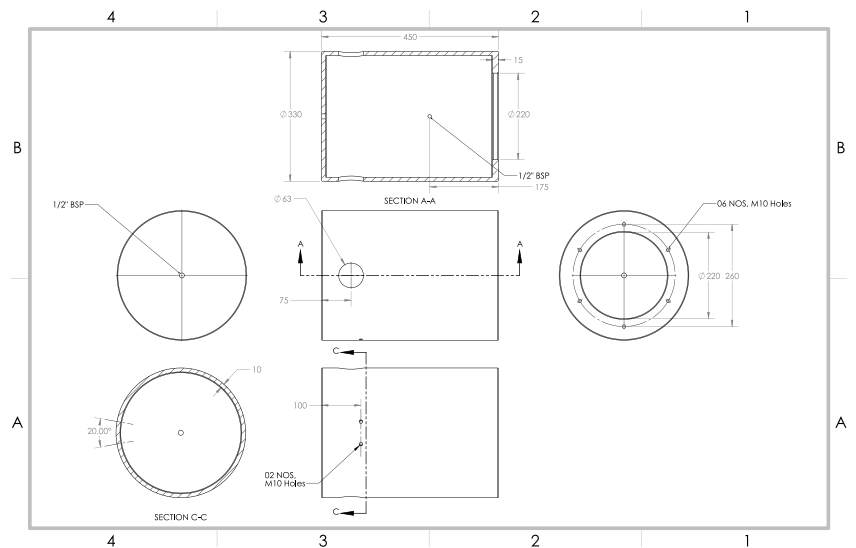
## C. I. HOUSING BOX

**Synonyms:** Housing Box, C.I. Can, Base, C.I. Transformer Housing Box, C.I. Transformer Box, C.I. Base

Part No	B500	B450	B400
Height	500mm standard	450mm standard	400mm standard
Diameter	330mm standard	330mm standard	330mm standard
Weight	45-48 kgs	43-45 kgs	40-42 kgs

- ▶ Top flange 15mm thickness, 220mm clear opening, 6 nos standard taped holes of 260 PCD, whole thickness 10mm based on AAI standard.
- ▶ Mounting light hole threading: 3/8" or M10
- ▶ Cable entry: 1 Entry, 2 Entry or 3 Entry
- ▶ Coating: PU base coating.
- ▶ Paint: Black enamel inside and outside.

Custom size available based on request



**EXTENSION**

Synonyms: Collar

Part No	E250	E200	E150	E100	E50
Height	250mm	200mm	150mm	100mm	50mm
Diameter	330mm standard	330mm standard	330mm standard	330mm standard	330mm standard
Weight	25-28 kgs	23-26 kgs	20-23 kgs	13-16 kgs	09-12 kgs
Cable Entry	Optional	Optional	Optional	No	No

- ▶ Top flange 15mm thickness, bottom flange 10mm thickness, two side 220mm clear opening, 6 nos standard taped holes of 260 PCD.
- ▶ Mounting light hole threading: 3/8" or M10
- ▶ Coating: PU base coating.
- ▶ Paint: Black enamel inside and outside.

**Custom size available based on request****FEATURES OF HOUSING BOX AND EXTENSION:**

Cast Iron bases are the self supporting and have characteristics to bear by themselves, and it can withstand greater load and has a good degree of resistance against corrosion. Cast iron is capable of resisting compression and traction.

Thickness of base is all around 10mm, top of the base 15mm flange, Height 450mm (this is indian government approved design) bigger advantage is cheaper than other material base (like aluminium, ms, ss etc.)

Indian government replaced other bases by Cast Iron bases.

It have universal mounting system.

Three layer PU base coating: PU base redoxied, PU base putty, PU base Japan black color - effectively protects base against corrosion.

PCM grommets ensures watertight conduit entrances.

The base itself allows for raising the lighting fixture.

The base will keep transformer and connectors in clean conditions.

The base is technically superior and cheaper compared to others.



## SHALLOW BASE

Size	SB 8"	SB 12"
Height	130mm standard	150mm standard
Diameter	219mm standard	321mm standard
Weight	08 kgs	12 kgs
Taped Hole	4.nos standard taped holes of 184 PCD.	6.nos standard taped holes of 285.70 PCD.
Threading	Mounting light hole threading: M10	Mounting light hole threading: M10
Mounting light Clearance	206mm	308mm
Cable entry	Bottom/Side	Bottom/Side
Coating	Powder coating	Powder coating
Paint	Ariix black	Ariix black

Custom size available based on inset light

### FEATURES OF SHALLOW BASE

Designed for shortest possible installation time

Equipped with nut for O-ring if watertight construction is necessary

Made of corrosion proofed cast iron / aluminum alloy

Impregnation for improving tightness optional available

Light weight eases handling in the field.

Optimised thermal conductivity increases the operating life of the inset lights

Easy connection between base and wiring system provided by 110 mm bottom hole

Design of shallow base's surface itself strengthening the hold in runway.

### Additional part included in shallow base SB 8"

Part	No/base	Part No.
Gasket	01	G1
Screw m10 x 30	04	Sm1030
Washer m10	04	Wm1030

### Additional part included in shallow base SB 12"

Part	No/base	Part No.
Gasket	01	G1
Screw m10 x 30	06	Sm1030
Washer m10	06	Wm1030





## ARIIX PRODUCTS INDIA PRIVATE LIMITED



---

Office: SF-10, JBR Arcade, Science City Road, Ahmedabad - 380060, Gujarat, India

Casting Foundry: Plot No.1, Road No.8, Tribhuvan Industrial Estate, Kathwada GIDC, Ahmedabad - 382430, Gujarat, India

Chemical Plant: Plot No.3302, Road No.33, B/H Gopsi Pharma, Panoli GIDC, Ankleshwar - 394116, Gujarat, India



+91 99249 96644

[Info@ariix-india.com](mailto:Info@ariix-india.com)

